

Recognition of Deteriorated Table-form Documents: A New Approach

LUIZ ANTÔNIO PEREIRA NEVES¹, JACQUES FACON², JOÃO MARQUES DE CARVALHO¹

¹UFCG–Universidade Federal de Campina Grande - Campina Grande, PB, Brasil
 {neves, carvalho}@dee.ufcg.edu.br

²PUCPR–Pontifícia Universidade Católica do Paraná - Curitiba, PR, Brasil
 facon@ppgia.pucpr.br

Abstract. This poster presents a new approach for deteriorated table-form document recognition. The methodology depends on the error detection and correction phases for successful form cell extraction.

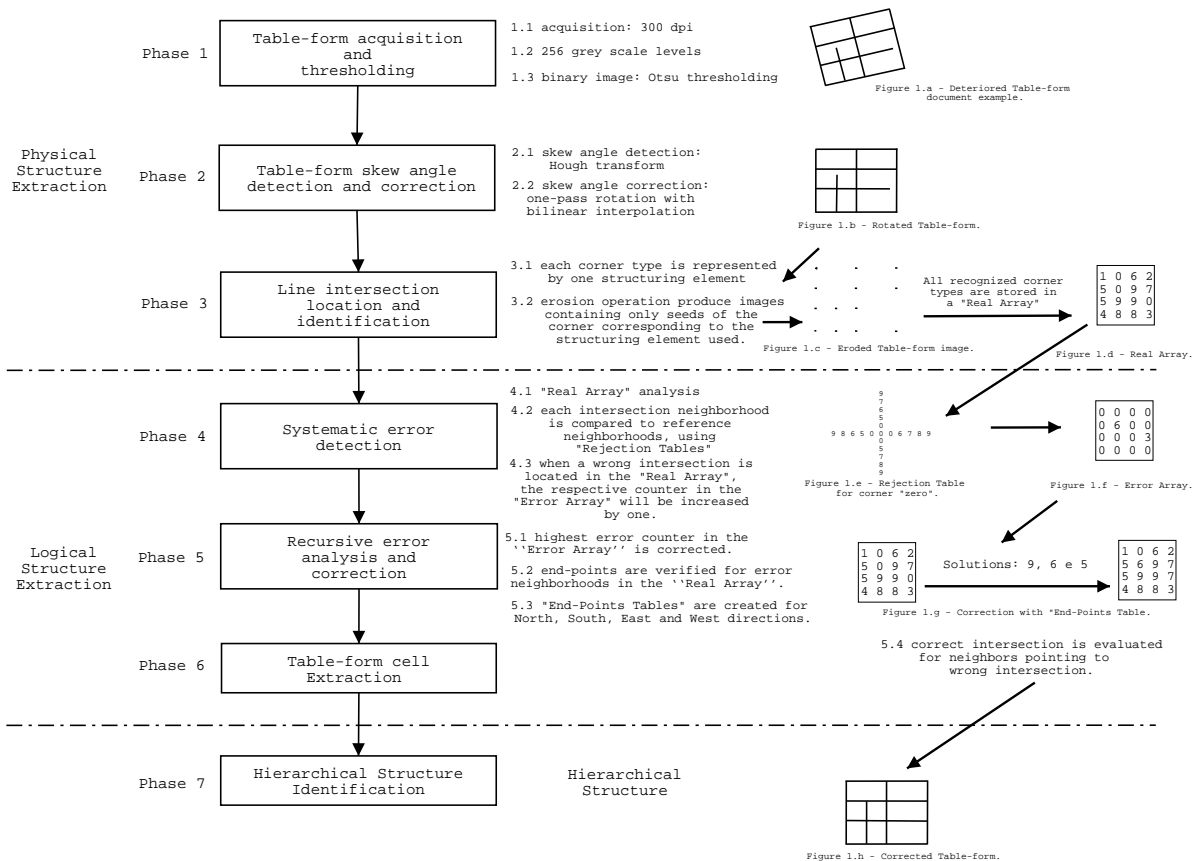


Figure 1: Recognition of a Table-form document.

Objective To present a novel approach for recognizing deteriorated table-form documents (Figure 1), using little a priori knowledge [1].

Acknowledgments

The authors would like to express their thanks to CAPES/PROCAD for the financial support of the research.

References

- [1] Luiz Antônio Pereira Neves. Extração de células de dados manuscritos em tabelas. Master's thesis, Pontifícia Universidade Católica do Paraná - PUCPR, 1999.